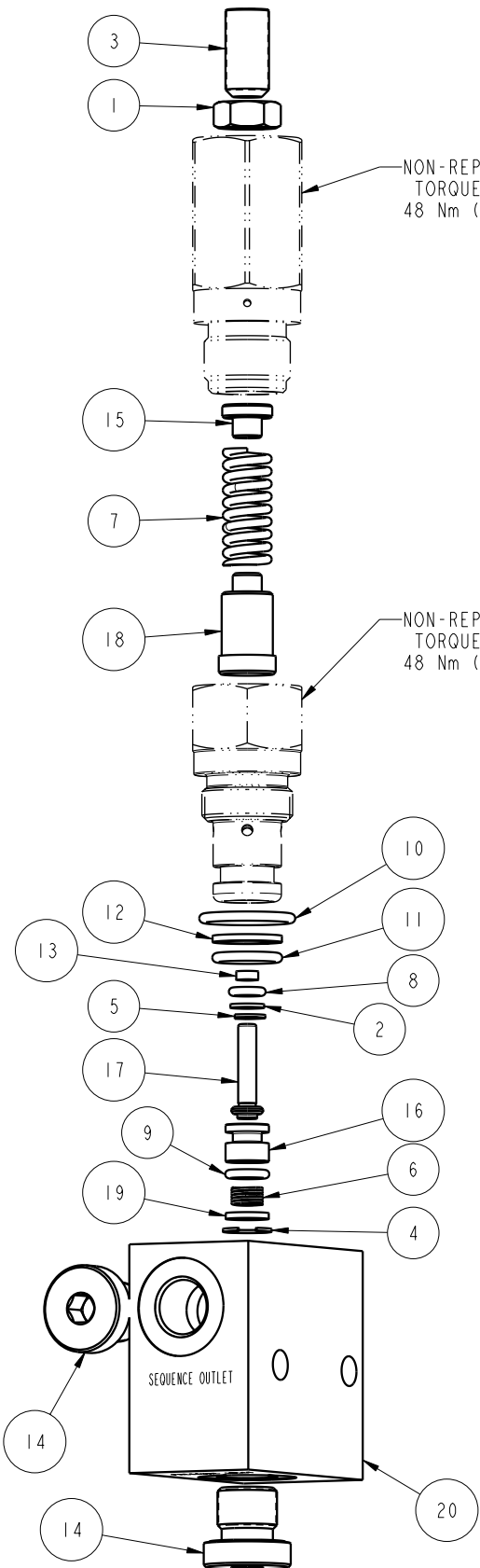


LUBRICATE ALL SEALS WITH CLEAN HYDRAULIC OIL PRIOR TO ASSEMBLY.  
DO NOT USE SILICONE BASED LUBRICANTS.



NON-REPLACEMENT PART  
TORQUE TO  
48 Nm (35 FT-LB)

NON-REPLACEMENT PART  
TORQUE TO  
48 Nm (35 FT-LB)



NO	QTY	PART NO	DESCRIPTION	STD SEAL KIT	SPRING KIT
1	1	21420019	NUT, HEX, 3/8-64, SST		
2	1	21430022	WASHER		
3	1	21440035	SCREW, SET, FP, 3/8-64 x 3/4, SST		
4	1	23002015	RETAINING RING, BASIC INTERNAL	X	X
5	1	23010006	RETAINING RING, C, EXT	X	
6	1	23355009	SPRING, COMPRESSION	X	X
7	1	23355010	SPRING, COMPRESSION		X
8	1	39000009	O-RING, (-008)	X	
9	1	39000063	O-RING, (-010)	X	
10	1	39000064	O-RING, (17mm x 2.90)	X	
11	1	39000065	O-RING, (11mm x 2.70)	X	
12	1	39010062	BU RING, (11mm x 2)	X	
13	1	39010063	SEAL, ROD	X	
14	2	43068006	PLUG, PORT, HOLLOW HEX, G1/4		
15	1	87044005	GUIDE, SPRING, UPPER, VLV, SEQ, 7MP <sub>a</sub>		
16	1	87044006	PISTON, VLV, SEQ, 7MP <sub>a</sub>		
17	1	87044007	PLUNGER, VLV, SEQ, 7MP <sub>a</sub>		
18	1	87044008	GUIDE, SPRING, LOWER, VLV, SEQ, 7MP <sub>a</sub>		
19	1	87044009	RETAINER, VLV, SEQ, 7MP <sub>a</sub>		
20	1	87044012	MANIFOLD, VLV, SEQ, BSPP		
N/A	N/A	60704005	KIT, SEAL	NOTED	N/A
N/A	N/A	61704010	KIT, SPRING	N/A	NOTED

**PARTS LIST**



ASSEMBLIES AFFECTED  
47044013

PARTS LIST, ASSY, VLV, SEQ, LP, BSPP

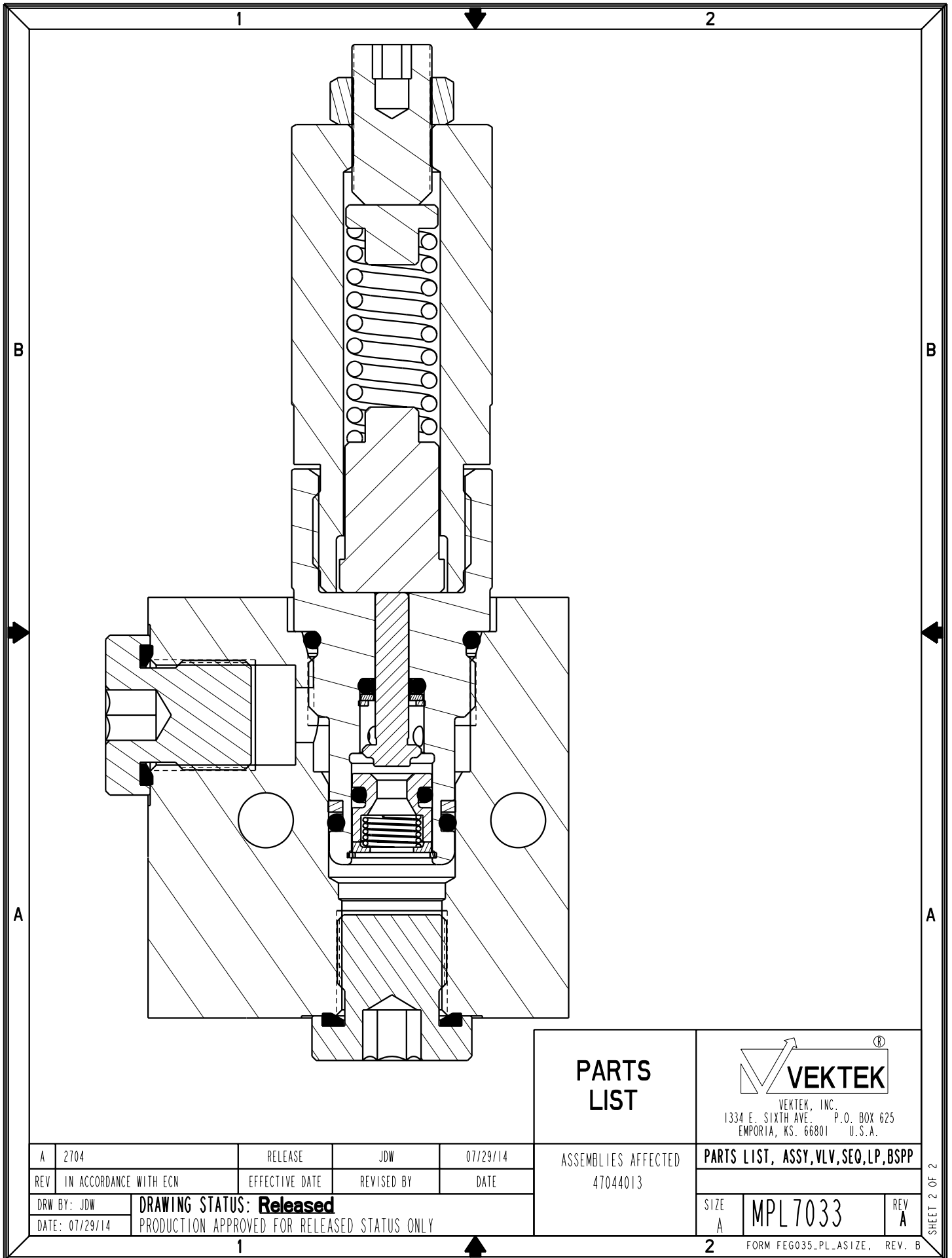
SIZE A  
MPL7033


REV A

FORM FEG035\_PL\_ASIZE, REV. B

A	2704	RELEASE	JDW	07/29/14
REV	IN ACCORDANCE WITH ECN	EFFECTIVE DATE	REVISED BY	DATE
DRW BY:	JDW	<b>DRAWING STATUS: Released</b>		
DATE:	07/29/14	PRODUCTION APPROVED FOR RELEASED STATUS ONLY		

SHEET 1 OF 2



<b>PARTS LIST</b>	 <b>VEKTEK</b> VEKTEK, INC. 1334 E. SIXTH AVE. P.O. BOX 625 EMPORIA, KS. 66801 U.S.A.
	<b>PARTS LIST, ASSY, VLV, SEQ, LP, BSPP</b>
ASSEMBLIES AFFECTED 47044013	SIZE <b>A</b>
<b>MPL7033</b>	
FORM FEG035_PL_ASIZE, REV. B	

A	2704	RELEASE	JDW	07/29/14
REV	IN ACCORDANCE WITH ECN	EFFECTIVE DATE	REVISED BY	DATE
DRW BY:	JDW	<b>DRAWING STATUS: Released</b>		
DATE:	07/29/14	PRODUCTION APPROVED FOR RELEASED STATUS ONLY		

SHEET 2 OF 2